

FLANGE STAMPATE

FLANGE STAMPATE PN 16

FLANGES FROM PRESSED STAINLESS STEEL



CARATTERISTICHE TECNICHE

- // **Materiale:** acciaio inox Aisi 304
(Aisi 316 su richiesta)
- // **Saldature:** a TIG senza apporto di materiale
- // **Modelli filettati:** filettature gas UNI ISO 228/1
- // **Pressione nominale di esercizio:** 16 bar

TECHNICAL FEATURES

- // **Material:** stainless steel Aisi 304
(Aisi 316 on request)
- // **Welded joints:** made with TIG method
without any additional material
- // **Threaded models:** gas threads UNI ISO 228/1
- // **Nominal working pressure:** 16 bar



VERSIONI FORNIBILI SU RICHIESTA // MODELS AVAILABLE ON REQUEST

FLANGE PIANE UNI EN 1092-1 PN 16 // PLAIN FLANGES UNI EN 1092-1 PN 16

Misura Size	1/2" DN 15	3/4" DN 20	1" DN 25	1" 1/4 DN 32	1" 1/2 DN 40	2" DN 50	2" 1/2 DN 65	3" DN 80	4" DN 100	5" DN 125	6" DN 150
AISI 304	X	X	X	X	X	X	X	X	X	X	X
AISI 316	X	X	X	X	X	X	X	X	X	X	X

FLANGE CIECHE UNI 6093 PN 16 // BLIND FLANGES UNI 6093 PN 16

Misura Size	1/2" DN 15	3/4" DN 20	1" DN 25	1" 1/4 DN 32	1" 1/2 DN 40	2" DN 50	2" 1/2 DN 65	3" DN 80	4" DN 100	5" DN 125	6" DN 150
AISI 304	X	X	X	X	X	X	X	X	X	X	X
AISI 316	X	X	X	X	X	X	X	X	X	X	X

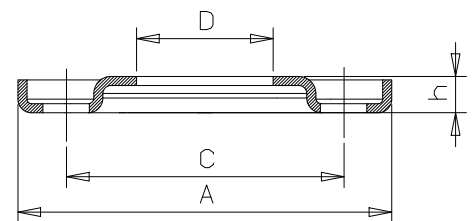
FLANGE SEMPLICI //

LOOSE FLANGES



DIMENSIONI E PESI // DIMENSIONS AND WEIGHTS

Misura Size	DN	Dimensioni in mm // Dimensions in mm					N° fori N. holes	Diam. fori Diam. holes	Peso in kg Weight in kg
		A	C	D	h	S			
1"	25	115	85	40	16	3	4	14,5	0,300
1"1/4	32	140	100	50	16	3	4	18	0,415
1"1/2	40	150	110	58	16	3	4	18	0,465
2"	50	165	125	69	16	4	4	18	0,750
2"1/2	65	185	145	85	18	4	4	18	0,870
3"	80	200	160	99	18	4	8	18	0,990
4"	100	225	180	124	19	5	8	18	1,315



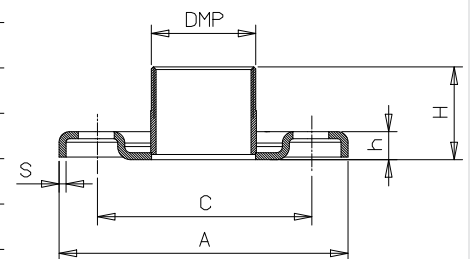
FLANGE CON FILETTO MASCHIO //

FLANGES WITH EXTERNAL THREAD



DIMENSIONI E PESI // DIMENSIONS AND WEIGHTS

Misura Size	DN	DMP	Dimensioni in mm // Dimensions in mm					N° fori N. holes	Diam. fori Diam. holes	Peso in kg Weight in kg
			A	C	H	h	S			
1"	25	1" M	115	85	36,5	16	3	4	14,5	0,370
1" 1/4	32	1" 1/4 M	140	100	41,5	16	3	4	18	0,530
1" 1/2	40	1" 1/2 M	150	110	46,5	16	3	4	18	0,605
2"	50	2" M	165	125	52,5	16	4	4	18	0,940
2" 1/2	65	2" 1/2 M	185	145	62,5	18	4	4	18	1,200
3"	80	3" M	200	160	72,5	18	4	8	18	1,450
4"	100	4" M	225	180	83,5	19	5	8	18	2,177



FLANGE CON FILETTO FEMMINA //

FLANGES WITH INTERNAL THREAD

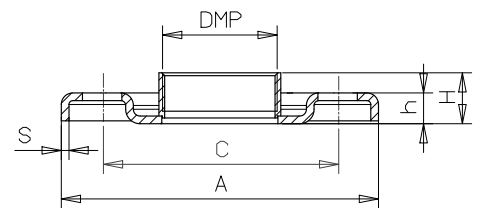
// Disponibile anche in acciaio zincato

// Available also in galvanized steel



DIMENSIONI E PESI // DIMENSIONS AND WEIGHTS

Misura Size	DN	DMP	Dimensioni in mm // Dimensions in mm					N° fori N. holes	Diam. fori Diam. holes	Peso in kg Weight in kg
			A	C	H	h	S			
1"	25	1" F	115	85	19	16	3	4	14,5	0,322
1" 1/4	32	1" 1/4 F	140	100	22	16	3	4	18	0,462
1" 1/2	40	1" 1/2 F	150	110	22	16	3	4	18	0,534
2"	50	2" F	165	125	25,5	16	4	4	18	0,803
2" 1/2	65	2" 1/2 F	185	145	57,5	18	4	4	18	1,240
3"	80	3" F	200	160	64,5	18	4	8	18	1,480
4"	100	4" F	225	180	73,5	19	5	8	18	2,227



FLANGE CIECHE //

BLIND FLANGES



DIMENSIONI E PESI // DIMENSIONS AND WEIGHTS

Misura Size	DN	Dimensioni in mm // Dimensions in mm				N° fori N. holes	Diam. fori Diam. holes	Peso in kg Weight in kg
		A	C	h	S			
1"	25	115	85	16	3	4	14,5	0,335
1" 1/4	32	140	100	16	3	4	18	0,473
1" 1/2	40	150	110	16	3	4	18	0,535
2"	50	165	125	16	4	4	18	0,845
2" 1/2	65	185	145	18	4	4	18	1,035
3"	80	200	160	18	4	8	18	1,220
4"	100	225	180	19	5	8	18	1,746

